



Land & Property
Information

A division of the Department of Finance & Services

www.lpi.nsw.gov.au



Automating Data Supply and Access Maps on the move Mapped Out 2013

Strategic Direction

LPI Strategic Plan 2012 to 2015

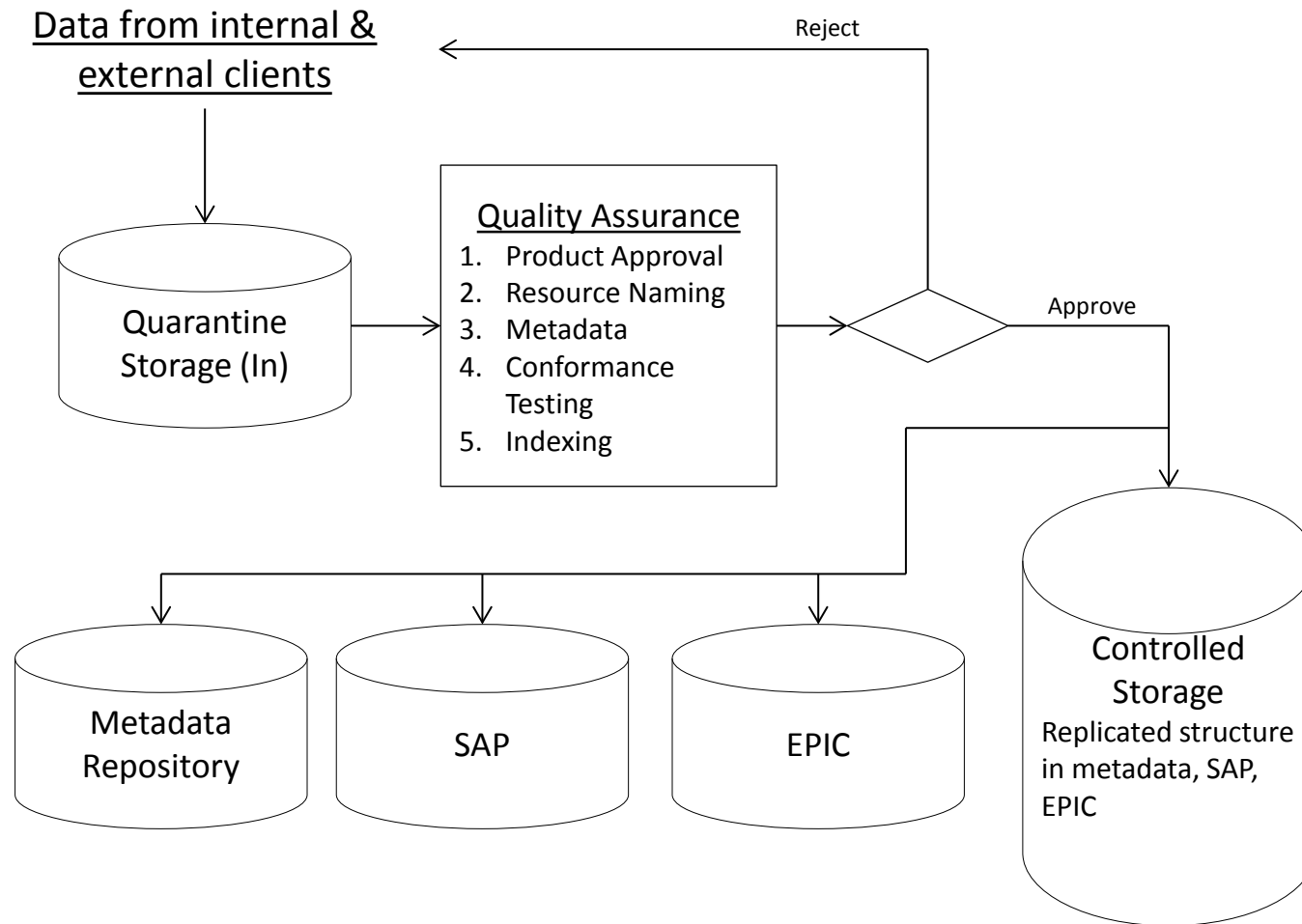
- Single source of truth
- Increased interaction with our customers
- Smart tools and information services
- Simple and flexible web based services
- Improve public policy making through the use and analysis of spatial information
- Comprehensive, real time, precise, reliable, timely and accurate spatial products and services
- Access to information through electronic services
- Enhanced land surface models and imagery
- Access to information through web services and social media

LPI Product Delivery SDI

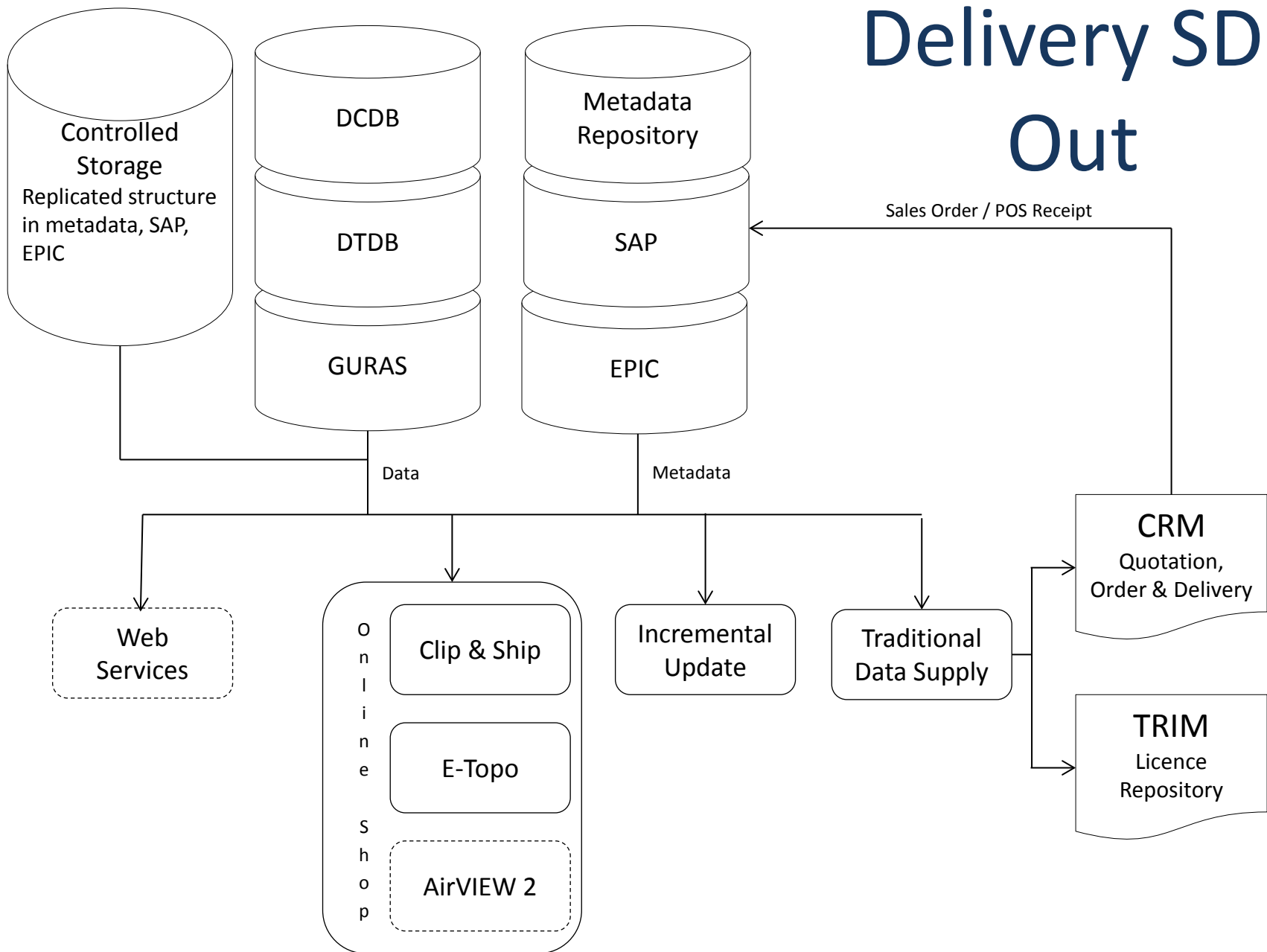
Infrastructure to Support LPI's Strategic Direction

- Integrated metadata, storage and financials
- Dedicated controlled product storage (150 TB)
- Intuitive product discovery systems linked to online product delivery applications
- Move towards web enabled access to authoritative data through web services.

Delivery SDI - Stored data - In

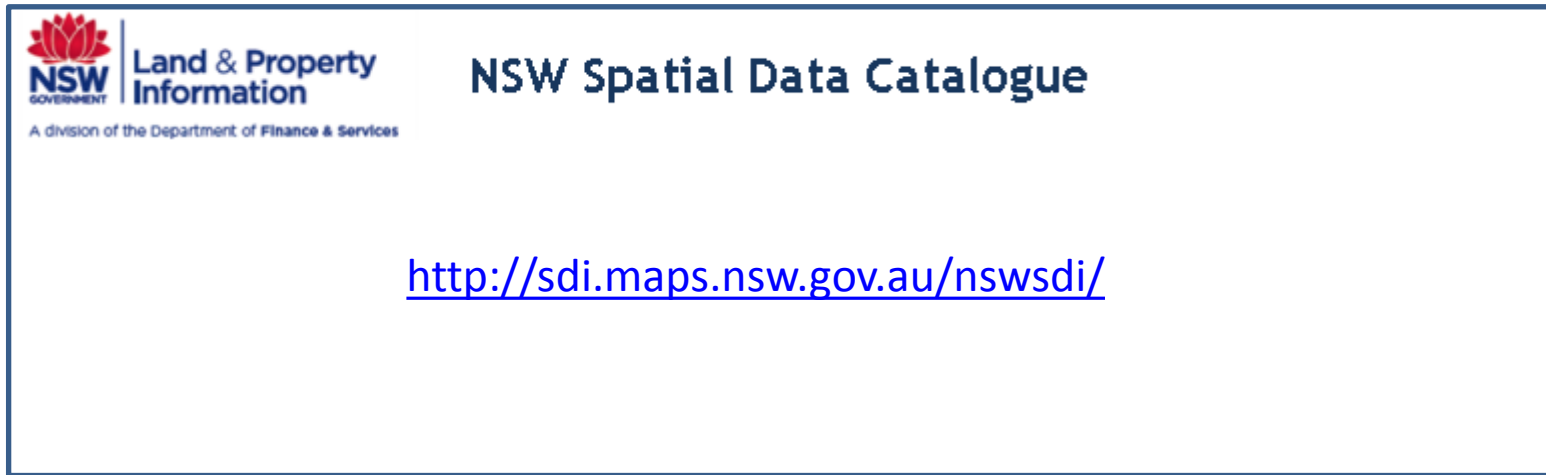


Delivery SDI Out



Metadata – NSW Spatial Data Catalogue

USER ACCEPTANCE TESTING – USER ACCEPTANCE TESTING – USER ACCEPTANCE TESTING



USER ACCEPTANCE TESTING – USER ACCEPTANCE TESTING – USER ACCEPTANCE TESTING

Automated Delivery

On Line Spatial Services (OSS)

- The OSS project will develop and implement online tools that will allow for the discovery, licencing, purchase and, where applicable, delivery of LPI core spatial products.

Applications include:

- Clip & Ship
- E-Topo
- AirVIEW 2 *In Development*

LPI Online Shop



Land & Property
Information

A division of the Department of Finance & Services

http://ishop/wps/portal/lpma/lpi-shop/!ut/p/b1/04_SjzQ0sDQyNTA0t9SP0I_KSyzLTE8syczPS8wB8aPM4oOdnEJNHQ3NDA3MnV0MPA3N_EycQw29zCxNgQoigQoMcABHA0L6vfSj0nPyk4BWhetH4VdsBFWAxzl_j_zcVP3cqByL7CwTRQBxuwBw/dl4/d5/L2dBISEvZ0FBIS9nQSEh/



Land & Property
Information

A division of the Department of Finance & Services



[Shop Home](#)

[About Us](#)

[Support](#)

[My Profile](#)

[SIX](#)

[My Cart](#)

[My Documents](#)

0 Items Total \$0.00 0 New Documents

Welcome Greg Windsor | [Log Out](#) | [SIX Portal](#) > [webgov](#)

> [Title Searches and Records](#)

> [Specialised Searches](#)

> [Deeds](#)

> [Land Values](#)

> [Property Information](#)

> [eNOS](#)

> [Torrens Assurance Levy](#)

> [Maps and Spatial Data](#)

> [Map Store](#)

> [Book Store](#)

> [News](#)

> [Newsletter Registration](#)

> [Search](#)

Maps and Spatial Data

Find spatial datasets, soft and printed maps and aerial imagery

Welcome to **Maps and Spatial Data**.

Clip & Ship



Purchase spatial data sets for Local Government Areas (LGAs) or by Minimum Bounding Rectangle (MBR) selection.
Clip & Ship files can only be used in a GIS system.

[Before you start](#)

[How to navigate](#)

[Clip & Ship FAQ](#)

[Topographic data](#)

[Cadastre data](#)

→ [Order Now](#)

Map Store



Topographic Maps

Browse, select and purchase your topographic maps.
Choose whether you prefer online delivery of a PDF or a printed map by post.

[Before you start](#)

[How to navigate](#)

[Topographic Printed Map Info](#)

[Topographic PDF Info](#)

→ [Order Now](#)

Electoral Maps

Browse, select and purchase



Product Catalogue

Electronic delivery of products and services...

Documents delivered via your email
Register to manage your documents
Keep informed, receive the OLS newsletter

\$70.15

This product can be
ordered
electronically.
Click here to go to
the
Map Viewer

CadVIEW Reduced LG

This allows you to make an online purchase of cadastral data for a selected Local Government Area (LGA) or bounding box. After selecting the required area of extent and completing the online payment, you will receive the data electronically. We will advise you by email when it is ready to be collected. The data you receive comes from the State's Digital Cadastral Data Base (DCDB), including the boundaries of land parcels and many administrative entities. If you need more information, see Technical Description on the cadastral information which is included.

Click here for metadata :

<http://sdi.nsw.gov.au/GPT9/catalog/search/viewMetadataDetails.page?uuid=%7B73EAFF5-EB5A-42AA-BE17-F6F4F56967E6%7D>

Back

Download
Free ZIP

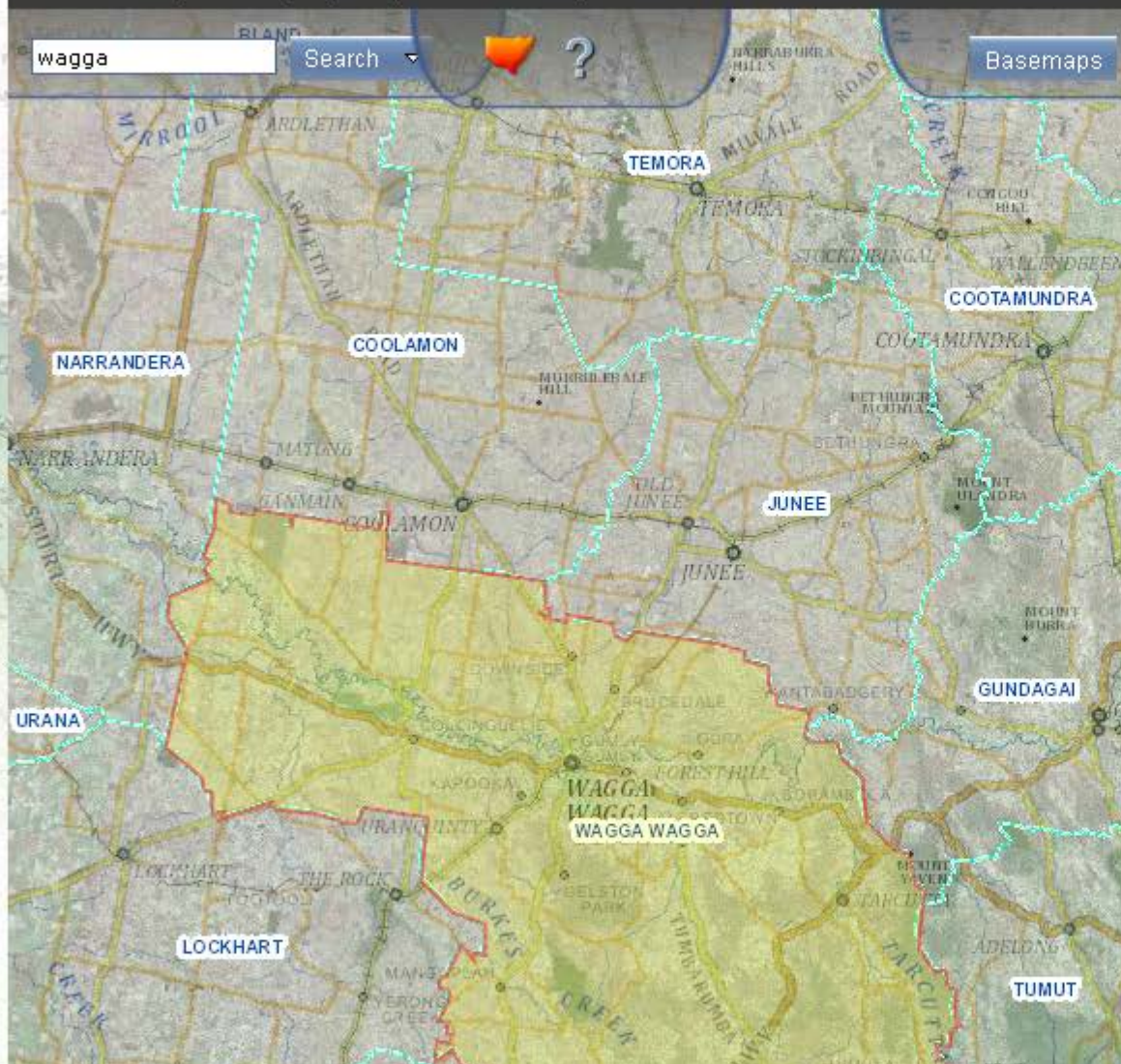


[Online Shop](#)
[Maps](#)
[My Documents](#)
[My Profile](#)
[Help](#)

 0 Items Total \$0.00  0 New Documents

[Clip & Ship](#)
[e-Topo](#)
[Admin](#)

Welcome Greg Windsor | [Log Out](#) | [SIX Portal](#) > [webgov](#)

[Basemaps](#)


Clip & Ship

[Topographic Data](#)
[Cadastral Data](#)

Active Selection

[Search by LGA](#)
[Search by MBR](#)

Feature: WAGGA WAGGA,
Projection: Lat/Long GDA94,
Format: Mapinfo .tab,
Type: Topographic

Projection

Format delivery

☒ Topographic

☐ Cadastral

Cart Items

Waiting for selection



Online Shop

Maps

My Documents

My Profile

Help

0 Items Total \$0.00 0 New Documents

Clip & Ship

e-Topo

Admin

Welcome Greg Windsor | Log Out | SIX Portal > webgov

wagga

Search

Basemaps

Clip & Ship

Topographic Data

Cadastral Data

Full Screen

Accept or decline agreement terms

CONTENT LICENCE AGREEMENT TO USE “CLIP & SHIP” DATA IMPORTANT – READ THIS LICENCE AGREEMENT CAREFULLY BEFORE PROCEEDING

IF YOU AGREE WITH THE FOLLOWING LICENCE CONDITIONS, CLICK THE 'I ACCEPT' BUTTON.

IF YOU DO NOT WISH TO AGREE WITH THE FOLLOWING LICENCE CONDITIONS, YOU MUST CLICK THE 'I DO NOT ACCEPT' BUTTON.

IF YOU AGREE TO THESE LICENCE CONDITIONS IT WILL CREATE A LEGAL AGREEMENT BETWEEN THE CROWN IN

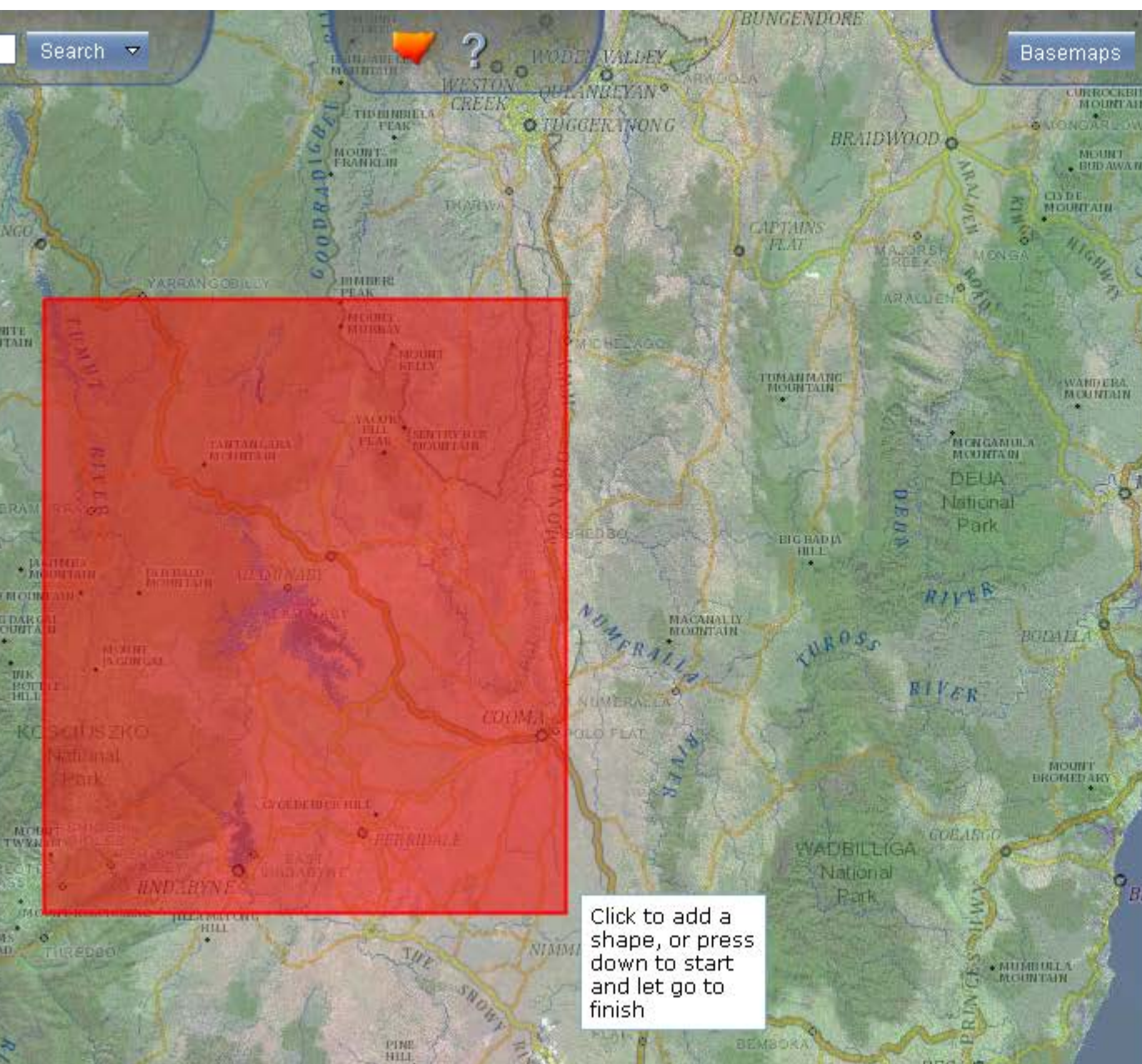
☒ I accept the terms of this agreement

☐ I decline

☒ Topographic

☐ Cadastral

Add selection



Click to add a shape, or press down to start and let go to finish

Clip & Ship

Topographic Data

Cadastral Data

Active Selection

Search by LGA

Search by MBR

☒ Area selection

Feature: MBR 10767.620 SQKM To
Projection: Lat/Long GDA94,
Format: Mapinfo .tab,
Type: Topographic

Projection

Lat/Long GDA94

Format

Mapinfo

☒ Topographic

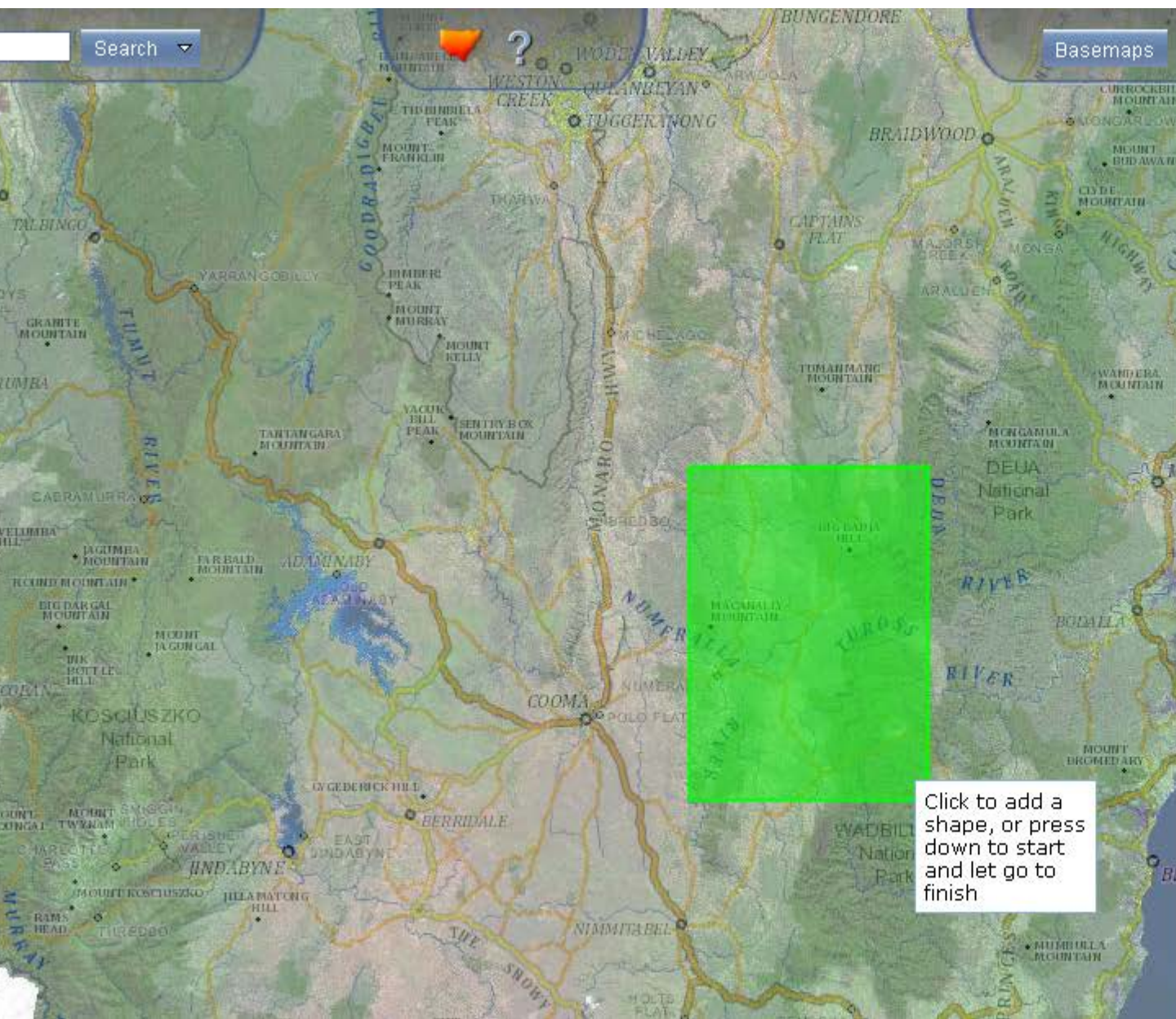
☐ Cadastral

Add selection

Cart Items

WAGGA WAGGA

Go to cart



Search

Basemaps

Clip & Ship

Topographic Data

Cadastral Data

Active Selection

Search by LGA

Search by MBR

Area selection

Feature: MBR 2784.265 SQK
Projection: Lat/Long GDA94,
Format: Mapinfo .tab,
Type: Topographic

Projection

Lat/Long GDA94

Topographic

Cadastral


Add selection

Cart Items

WAGGA WAGGA

Go to cart

Click to add a shape, or press down to start and let go to finish

Shopping Cart > My Cart 

Select: [All](#) [None](#) *You need to sign up if your purchases are greater than \$100.00*

Remove	Description	Product ID	Qty	Unit Price	Total
<input type="checkbox"/>	CNS Online Feature:WAGGA WAGGA, Projection:undefined, Format:MAPINFO Type:TOPO	161100	<input type="text" value="1"/>	\$68.45	\$68.45
<input type="checkbox"/>	CNS Online Feature:MBR 2784.265 SQKM , Projection:undefined, Format:MAPINFO Type:TOPO	161090	<input type="text" value="1"/>	\$68.45	\$68.45
Total GST					\$12.45
Total Including GST					\$136.90

Remove selected

Update

Proceed to Checkout



[Shop Home](#)[About Us](#)[Support](#)[My Profile](#)[SIX](#)[My Cart](#)[My Documents](#)

2 Items Total \$136.90 0 New Documents

Welcome Greg Windsor | [Log Out](#) | [SIX Portal](#) > webgov[> Checkout](#)

Document delivery information

[? Help](#)

Once your payment is completed, your **electronic documents** will be delivered to your **"My Documents"** folder.

Register to receive LPI Online Shop e-Newsletter [here](#)[Checkout](#) > [Summary](#)[Summary](#)[Payment](#)[Billing](#)[Confirmation](#)[Receipt](#)

Description	Product ID	Qty	Unit Price	Total
CNS Online Feature:WAGGA WAGGA, Projection:undefined, Format:MAPINFO Type:TOPO	161100	1	\$68.45	\$68.45
CNS Online Feature:MBR 2784.265 SQKM , Projection:undefined, Format:MAPINFO Type:TOPO	161090	1	\$68.45	\$68.45
Total GST				\$12.45
Total Including GST				\$136.90

[Back To Cart](#)[Next](#)

Automated Delivery

Web Services

In Development



Data to be Accessed by the Web Service	Request by	Information Rendered
Points of Interest	Points of Interest (POI) Name	Name and geo-code as ASCII list or vector representation
Cadastral Parcel	Lot/DP	Minimum Bounding Rectangle (MBR)
	MBR	Rasterised Fabric for MBR.
Cadastral Annotation	Lot/DP	MBR
	MBR	Rasterised Annotation for MBR
Administrative Areas <ul style="list-style-type: none"> Suburbs LGA 	Administrative Area Name	MBR
	MBR	Rasterised Admin Layer and Annotation for MBR
Address Validation Service	Address String	ASCII candidate list and geocodes
	Lot/DP	ASCII candidate list and geocodes
(Support) Feature Count Dependant Renderer (FCDR)	MBR	Numeric Feature Count as integer
Dynamic Imagery Service	MBR	Imagery Extent based on MBR as tiles - <u>BestByResDate</u>
Automated Mapping Cache (Pre-cooked)	MBR	Vector Extent based on MBR as raster tiles
Best of Imagery Cache (Pre-cooked)	MBR	Imagery Extent based on MBR as tiles

Denotes Image Service

Denotes Non Image Service

Automated Delivery

Incremental Update

Baseline Supply Formats

- WKT - OGIS well known text
- Tab - MapInfo binary tables
- SDO - Oracle database SDO_GEOMETRY (ASCII representation)
- SQL SVR (Back end data to support common GIS).

Incremental Supply Formats

- GML OGIS - geographical markup language
- WKT OGIS - well known text.

Automated Delivery

Incremental Update Review

LPI to review IU services to increase performance:

- Users to review their requirements for individual layers supplied through IU. Reduce if required.
- Review user version of the update script and update if required. (Will change LPI themes supplied).
- Resupply baseline if required.
- Update LPI on client environment changes.
- **TIP 1:** Always retrieve XML packets within a week. Packets are wiped from the ftp server within 3 months of delivery.
- **TIP2:** Always apply updates in sequence.

LPI Imagery and LiDAR Programs



Land & Property
Information

A division of the Department of Finance & Services

http://www.lpi.nsw.gov.au/mapping_and_imagery/imagery_programs



Land & Property
Information

A division of the Department of Finance & Services

Product Development

LiDAR

Product	Price (GST Incl.) Per Product	Price (GST Incl.) Full Product Suite
Classified point cloud	\$563.75	\$563.75
Model key points	\$563.75	
Digital surface model		
10 Metre Grid	\$28	
5 Metre Grid	\$138	
1 Metre Grid	\$193	
Intensity image	\$338.25	
RCD 30 (mosaic of project area)	\$338.25	
Key diagram	Free with purchase	
Metadata	Free	

Product Development

ADS Surface

In Development



Strategic Projects

NSW Surface Economic Analysis

Objective:

To evaluate the net benefits of:

- completing the surface model for the entire state of NSW to contemporary standards
- enhancing the surface model to meet the reasonable expectations of users.

Use:

- The analysis will guide decisions on investment in appropriate technologies and processes that will deliver the best value from a surface model for the people of NSW.

Strategic Projects

NSW Imagery Program Survey

Objective:

- To determine stakeholder requirements for a revision program of standard spatial imagery capture over NSW utilising the upgraded ADS80 sensor and other alternative sensors for data capture.

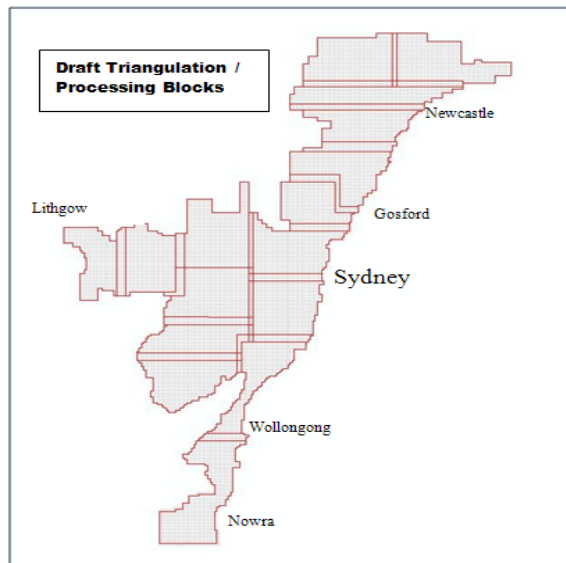
Use:

- LPI will prepare capture specifications and program priorities based on the results from this proposed ADS80 Imagery Program market survey.

Strategic Projects

Sydney Conurbation

- Visionmap A3 digital camera
- DGPS Control
- Ground Control
- Aerial Triangulation
- DEM
- Orthophoto Rectification
- Mosaicing
- Metadata
- Stereo workspaces
- Accuracy and consistency



2011 Sydney Conurbation Specification Summary	
Ground sampling distance	10cm
Number of runs	211
Flight line distance (km)	10300
Average distance between flight lines	1700m
Average flying height	3200m
Area coverage	14000 sq km
Spectral resolution	3 band R,G,B

Strategic Projects

Whole of Government Imagery Procurement Panel

- The objectives of the NSW Spatial Imagery Panel Project are to ensure the following:
 - To establish a Whole of Government Procurement Contract Panel to supply both State and Local Government agencies with remotely sensed imagery;
 - Development and implementation of Procurement Policies, Procedures and Guidelines for establishing a NSW Spatial Imagery Panel and procuring, storing and use of spatial imagery;
 - Development of an Implementation Plan for the eventual coordination and management of the current and future acquisition, storage, use and distribution of spatial imagery through a NSW WoG solution;
 - Development of a Funding and Resourcing submission for the implementation and ongoing management of the business processes that support the NSW Spatial Imagery Panel;
 - Promoting awareness of the ongoing benefits of a WoG procurement solution.

New Roles & Responsibilities



- Client subscription management and invoicing
- CORS account management
- Issue resolution (non – IT)
- Reporting and Monitoring
- Improvement and upgrade requests
- Product / Service reviews (client surveys etc.)



- Client subscription management and invoicing
- SiX account management for channel.
- Issue resolution (non – IT)
- Reporting and Monitoring
- Administration of terms and conditions e.g. Number of users
- Improvement and upgrade requests
- Product / Service reviews (client surveys etc.)

<http://www.lpi.nsw.gov.au/surveying/corsnet-nsw>

<https://six.nsw.gov.au/wps/portal/>



Land & Property
Information

A division of the Department of Finance & Services

Contact Us



**Land & Property
Information**

A division of the Department of Finance & Services

http://www.lpi.nsw.gov.au/mapping_and_imagery/spatial_data



**Land & Property
Information**

A division of the Department of Finance & Services